

300 SERIES SKID STEER LOADERS

L318 | L320 | L321 | L328 | L334



POWERFULLY COMPACT 300 SERIES.

The revised new 300 Series range of skid steer loaders is the evolution of New Holland skid steer loader design. The unique New Holland machines deliver comfort and performance in a compact package:

- Compact dimensions – under 2m high & just over 1.6m wide on the smallest model
- Excellent stability and weight distribution maximise performance and safety
- All-round visibility ensures high manoeuvrability and faster work cycles
- Comfort Deluxe Cab features excellent ergonomics and best-in-class comfort
- New colour display featuring integrated reversing camera
- Super Boom™ or Radial Lift - the choice is yours
- Choose simple mechanical or smooth electro-hydraulic controls offering advanced settings

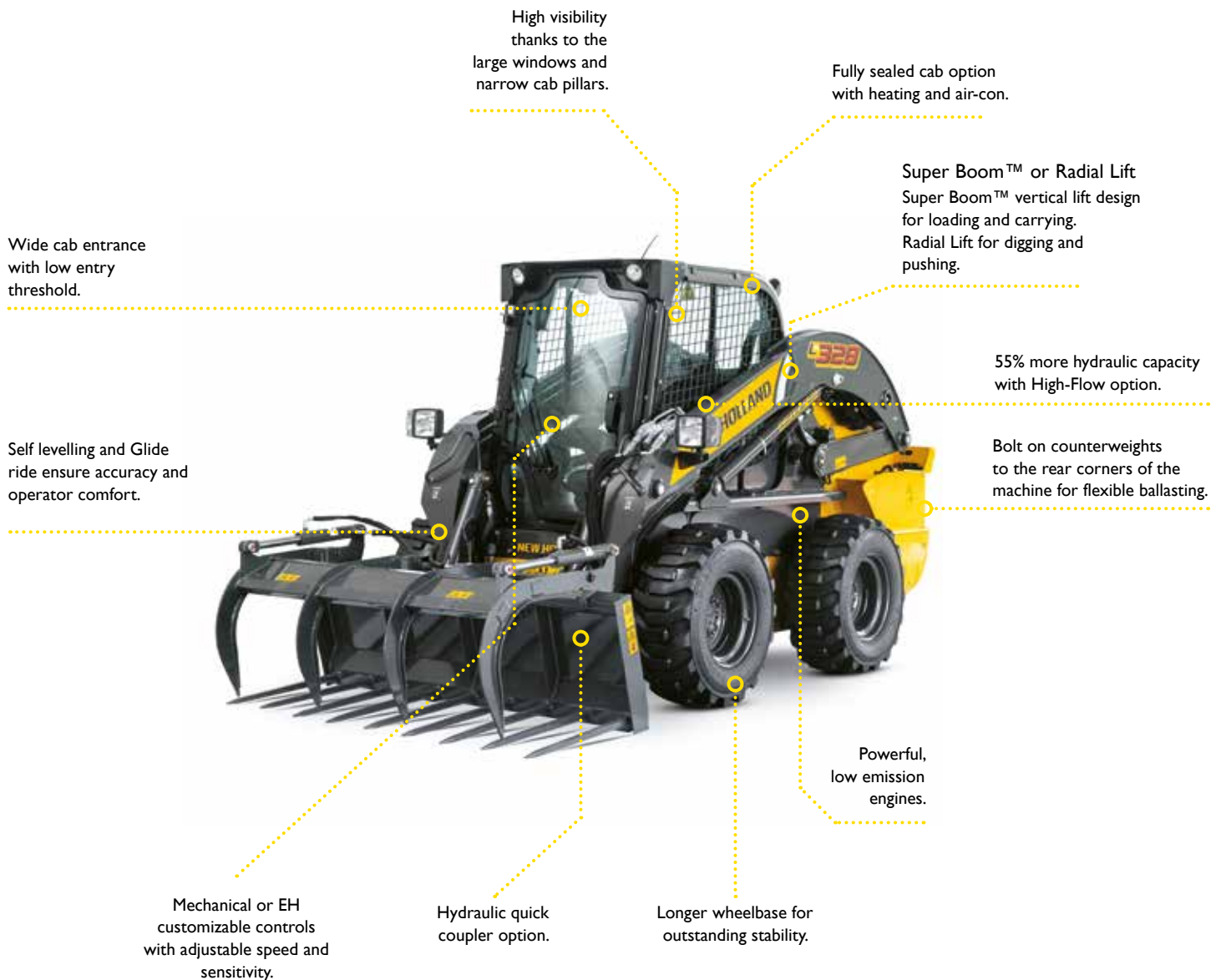


Models	Power (hp)	Max lift height (mm)	Tipping load (kg)	Width (mm)	Height (mm)	Operating weight (kg)	Rated Operating Capacity (kg)	Boom design	Control Mech / EH
L318	61	3050	1630	1625	1975	2830	815	Super Boom	○ / ○
L320	68	3075	1810	1780	2000	2930	905	Super Boom	○ / ○
L321	75	3125	1910	1780	2000	3160	955	Radial	○ / ○
L328	75	3290	2540	1780	2005	3580	1270	Super Boom	○ / ○
L334	91	3343	3090	1930	2045	4135	1545	Super Boom	- / I

● Standard ○ Optional - Not applicable

BUILT AROUND YOU.

New Holland skid steers loaders are reliable workhorses that stand up to any challenge you face. New Holland 300 Series are built around you with reliable engines that deliver powerful performance, yet use less fuel and are easy to maintain and reduce your operating costs. Three different auxiliary hydraulics packages give maximum versatility. Offering class leading space, comfort and ergonomics, the Comfort Deluxe Cab also affords excellent all round visibility and reduced blind spots.



FAST IN EXECUTION, SMOOTH IN OPERATION.

The New Holland skid steer loader range features of 5 models. New Holland knows that these machines will be used in a wide variety of applications, so have been engineered by design to offer versatility as standard. Whether you are handling bales, sweeping yards, feeding your cattle in winter or snow blowing, you've found your perfect farming partner to boost your productivity with fast cycle times resulting from its perfect balance, excellent stability and powerful hydraulic system.

Fast cycle times, smooth operation

The reliable hydraulic system delivers responsive controls and fast cycle times. In-line hydraulic pumps produce less noise and provide extra smooth operation. Add the optional high-flow hydraulics on all models to run attachments hour after hour.



Save time between jobs

The 300 Series dual-range transmission provides travel speeds in excess of 17kph to save time on and between job sites. The dual-range transmission is standard on the L320, L321, L328, L334.



RADIAL LIFT

SUPER BOOM

Best-in-class boom geometry

The New Holland 300 Series feature Radial Lift or Super Boom™ models, to cater for the specific needs of your business.

- For loading & lifting the patented vertical lift geometry of the Super Boom system enables operators to load material far beyond the reach and height of most other skid steer loader designs. The exceptional forward reach afforded by this design makes loading bales and reaching over feed barriers an effortless task
- For pushing & digging the Radial Lift geometry gives outstanding power through the direct connection of the boom with the frame. Productivity in applications such as manure handling, soil moving and yard scraping is boosted by their outstanding breakout force



MAKE COMFORT A PRIORITY.

The Comfort Deluxe Cab offers up to 25% more internal width than competition with greater head room and leg room. New features include the colour display with integrated rear camera, improved joystick controls to reduce thumb fatigue, handy Bluetooth radio and a USB port to charge mobile devices. 300 Series loaders also provide automatic straight-line tracking (on EH models only) to improve productivity and precision when working with a trencher or cold planer.

Wide, comfortable cab

The 300 Series cab is one of the widest in the industry. It's easy to enter and exit. Full-covering trim absorbs noise. The visibility panel on the cab roof gives you a clear view in all directions, even to the raised bucket or attachments. The fully sealed and pressurized cab minimizes dust and exhaust infiltration. Seat choices include the optional suspension seat or the heated, composite air-ride seat for maximum support and ultimate comfort. An optional, factory-installed lap bar is offered on all models.



All around visibility

A comprehensive view of the job site makes it easier for you to work productively and safely. The new 300 Series deliver:

- Clear and unobstructed view of the attachment and bucket edge
- Large visibility panel in the cab roof for a clear view of the attachment at full height
- High visibility mesh side screens
- Narrow cab pillars to maximize visibility
- The fully sealed and pressurized cab minimizes dust and exhaust infiltration
- Seat choices include the optional suspension seat or the heated, composite air-ride seat for maximum support
- An optional, factory-installed lap bar is offered on all models



ELECTRO-HYDRAULIC CONTROLS



MECHANICAL CONTROLS



Versatility and ergonomics

A choice of control style is available: mechanical or electro-hydraulic (EH) controls can be selected.

- New, ergonomically designed joysticks allow for a lower-profile control grip and feature soft buttons to reduce thumb fatigue
- New pods positioned below the joysticks provide more room between the operator's knees
- Electro-hydraulic controls are switchable between ISO to H pattern
- Models built with electro-hydraulic controls feature multiple speed and sensitivity settings, allowing operators to personalize the controls
- Electro-hydraulic control mounts feature horizontal and vertical adjustment to suit every operator
- Mechanical control models employ hand levers for direction control and foot pedals for boom function



New 8" colour display

The new 8 inch colour display is available on Electro-hydraulic control models, and is mounted to the right hand cab post to display all of your machines working parameters. It is easy to navigate and includes an automatically activated reversing camera for added safety.

- Key machine information is displayed such as engine performance information, RPM, fuel level, battery voltage, hydraulic oil temperature, engine temperature, and trip screen
- Engine settings menu includes economy mode, engine protection and ignition timeout settings
- Electro-hydraulic control settings are easily modified in the relevant menu
- The reversing camera can be set to engage automatically in reverse or can be always on
- Camera guidance lines can be activated depending on operator preference

ENVIRONMENTALLY FRIENDLY.

New Holland 300 Series comply with Tier 4B & Stage V regulations, cutting emissions levels, with over 90% less particulate matter (PM) and 50% less nitrogen oxide (NOx) than the previous generation. In addition when you don't need the full power of the machine, the variable flow hydraulic pump only uses the power required leading to significant extra-fuel savings as well as reduced operating noise.



- Diesel Particulate Matter (**PM**) Catalyst traps the residual particulate contained in the exhaust gas of the engine
- Cooled Exhaust Gas Recirculation (**CEGR**) process is now controlled electronically to achieve greater performance and fuel efficiency, as well as even greater reliability - for example, to help protect the engine from overheating
- The external Cooled EGR (**Exhaust Gas Recirculation**) system ensures efficient air handling and high engine power density with the shortest load response time
- Diesel Oxidation Catalyst (**DOC**) utilizes a chemical process in order to break down pollutants from diesel engines in the exhaust stream, turning them into less harmful components. DOC does not require regeneration and it is a maintenance-free component
- Diesel Particulate Filter (**DPF**) physically traps particulate matter from the engine exhaust. Electronic controls will trigger an automatic regeneration of the DPF system. Additionally, the system can notify the machine operator to manually regenerate the DPF system occasionally when the soot load in the DPF exceeds the range defined for automatic regeneration
- Selective Catalytic Reduction (**SCR**) technology: ammonia, in the form of AdBlue, a liquid that acts as reductant agent is injected into the exhaust stream to reduce the level of NOx

Models	Power (hp)	Engine	Displacement (l)	Emission Level	After Treatment system
L318	61	PERKINS	2.2	Stage V	CEGR + DOC
L320	68	PERKINS	2.2	Stage V	CEGR + DOC
L321	75	FPT F5H	3.4	Stage V	CEGR + DOC
L328	75	FPT F5H	3.4	Stage V	CEGR + DOC
L334	91	FPT F5B	3.4	Tier 4B / Stage 4	CEGR + SCR



EASY ACCESS, SIMPLIFIED SERVICE.

Easy access makes daily service and maintenance that much easier. Consequently, all daily service points are grouped together, and all major service points can be easily reached by flipping the cab forward.



Unmatched access

If ever needed, the entire cab can be tilted forward for unrivaled access to components and easy cab cleanout.



Get to it

Access engine oil, fuel fill, hydraulic oil, coolant and radiator points without tools, and clean the radiator from either side. Engine oil and filter changes are required every 500 hours, as are changes to the primary fuel filters and hydraulic oil filters.



READY FOR ANY JOB. MAXIMUM CHOICE, MAXIMUM VERSATILITY.

New Holland skid steers do a lot more than lift and load. Take a look at the wide array of attachments, you'll quickly see how the versatility of these machines can make you more productive.



Hi-tip bucket



Pallet forks



4 in 1 bucket



Brush bucket



Backhoe



Snow blade



Snow blower



Hole borer



Slurry scraper



Muck fork



Heavy duty muck grab



Bale squeeze

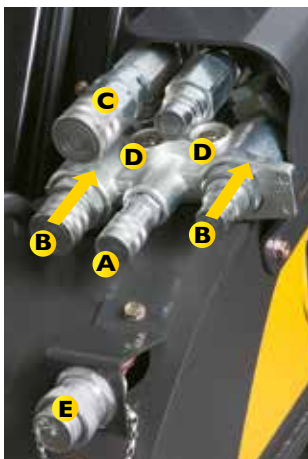


Bale spike



Features available for easy attachment use

An optional hydraulic attachment coupler increases uptime and productivity on the farm by allowing operators to exchange attachments quickly and safely.



A connect under pressure CUP hydraulic manifold is standard equipment on all models for easy hook-up of all hydraulic attachments. By pushing on the fitting, you release pressure in both hydraulic lines.

A - Hydraulic oil return (case drain)

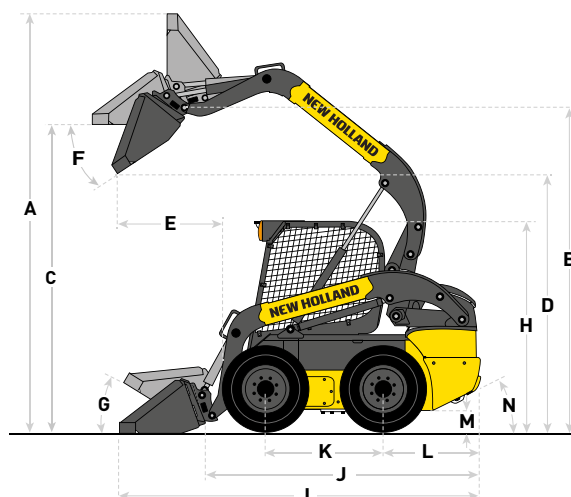
B - Hydraulic oil supply. These fittings slide into manifold and when pressed in, any pressure within the manifold is directed to the hydraulic oil reservoir

C - Drain line that flows to the tank

D - Pressure vents

E - 14-pin front electrical connection to control the most versatile attachments

SPECIFICATIONS



		L318	L320	L321	L328	L334
Engine		PERKINS N4LDI-TA	PERKINS N4LDI-TA	FPT F5H	FPT F5H	FPT F5B
Capacity	(l)	2.2	2.2	3.4	3.4	3.4
No of cylinders / Aspiration		4 / Turbo	4 / Turbo	4 / Turbo	4 / Turbo	4 / Turbo
Emission level	Stage/Tier	Stage V	Stage V	Stage V	Stage V	4 / 4B
Bore x Stroke	(mm)	84x100	84x100	99x110	99x110	99x110
Max Power	$\frac{[kW]}{hp(CV)}$	44.7/61	50/68	55/75	55/75	67/91
Rated engine speed	(rpm)	2800	2800	2500	2500	2500
Max Torque	(Nm)	183	208	314	314	383
Fuel tank capacity	(l)	74	74	74	96.5	96.5

Transmission	Hydrostatic w/ chain final drive to wheels					
Travel speeds low range	(kph)	11.9	12.5	11.4	11.4	12.4
high range	(kph)	17.4	18.3	16.9	16.9	18.5
Drive pump control	Spring Applied Hydraulic Release (SAHR)					

Hydraulic system						
Controls		Direct mechanical Hand or Foot type or Electro-Hydraulic			Electro-hydraulic	
Pump flow	(lpm)	78	78	92	92	92
Operating Pressure	(bar)	210	210	210	210	238
Optional High Flow	(lpm/bar**)	116 / 210	116 / 210	126 / 210	143 / 210	149 / 238
Optional Enhanced High Flow	(lpm/bar**)	-	-	-	-	133 / 276

Performance						
Operating weight	(kg)	2830	2930	3160	3580	4135
Tipping Load	(kg)	1630	1810	1910	2540	3090
ROC Rated Operating Capacity*	(kg)	815	905	955	1270	1545
ROC with weights	(kg)	865	950	1000	1330	1610
Lift Cylinder Breakout Force	(kN)	11.7	15.3	20.3	27.3	29.3
Bucket Cylinder Breakout Force	(kN)	24.7	32.5	32.3	38.3	36.4
Boom design		Super Boom	Super Boom	Radial	Super Boom	Super Boom

- Not applicable * 50% of tipping load ** max values, according priority to flow or pressure

		L318	L320	L321	L328	L334
Dimensions						
A - Overall Height	(mm)	4055	4080	4145	4285	4344
B - Bucket Hinge Pin	(mm)	3050	3075	3125	3290	3343
C - Bottom of Bucket	(mm)	2875	2900	2950	3115	3168
D - Dump Height	(mm)	2215	2240	2345	2455	2507
E - Dump Reach	(mm)	945	920	695	975	779
F - Dump Angle	(°)	52	52	40	55	47
G - Rollback Angle	(°)	35	34	31	34	35
H - Cab Height	(mm)	1975	2000	2000	2005	2045
I - Length with Bucket	(mm)	3585	3570	3525	3860	3890
J - Length without Attachment	(mm)	2685	2685	2670	2985	3020
K - Wheelbase/Track Length on ground	(mm)	1130	1130	1130	1320	1320
L - Rear Axle to Bumper	(mm)	925	925	925	1035	1080
M - Ground Clearance	(mm)	180	205	205	205	245
N - Rear Departure Angle	(°)	23	25	25	24	27
Width Over Tires / Track	(mm)	1625	1780	1780	1780	1930

- Not applicable



The New Holland dealer network is, in itself, the best guarantee of continued productivity for the machines it delivers to its customers. New Holland service technicians are fully equipped to resolve all maintenance and repair issues, with each and every service point providing the high standards they are obliged to observe under New Holland's stringent quality guidelines. The New Holland global parts network ensures fast, reliable, replacement parts for less downtime, increased productivity and, of course, profitable operation for its customers.

Learn more at www.newholland.com

Printed on recycled paper
CoC-FSC 000010 CQ Mixed sources



AT YOUR OWN DEALERSHIP

The information contained in this brochure is intended to be of general nature only. The NEW HOLLAND CONSTRUCTION MACHINERY S.p.A. company may at any time and from time to time, for technical or other necessary reasons, modify any of the details or specifications of the product described in this brochure. Illustrations do not necessarily show products in standard conditions. The dimensions, weights and capacities shown herein, as well as any conversion data used, are approximate only and are subject to variations within normal manufacturing techniques.